

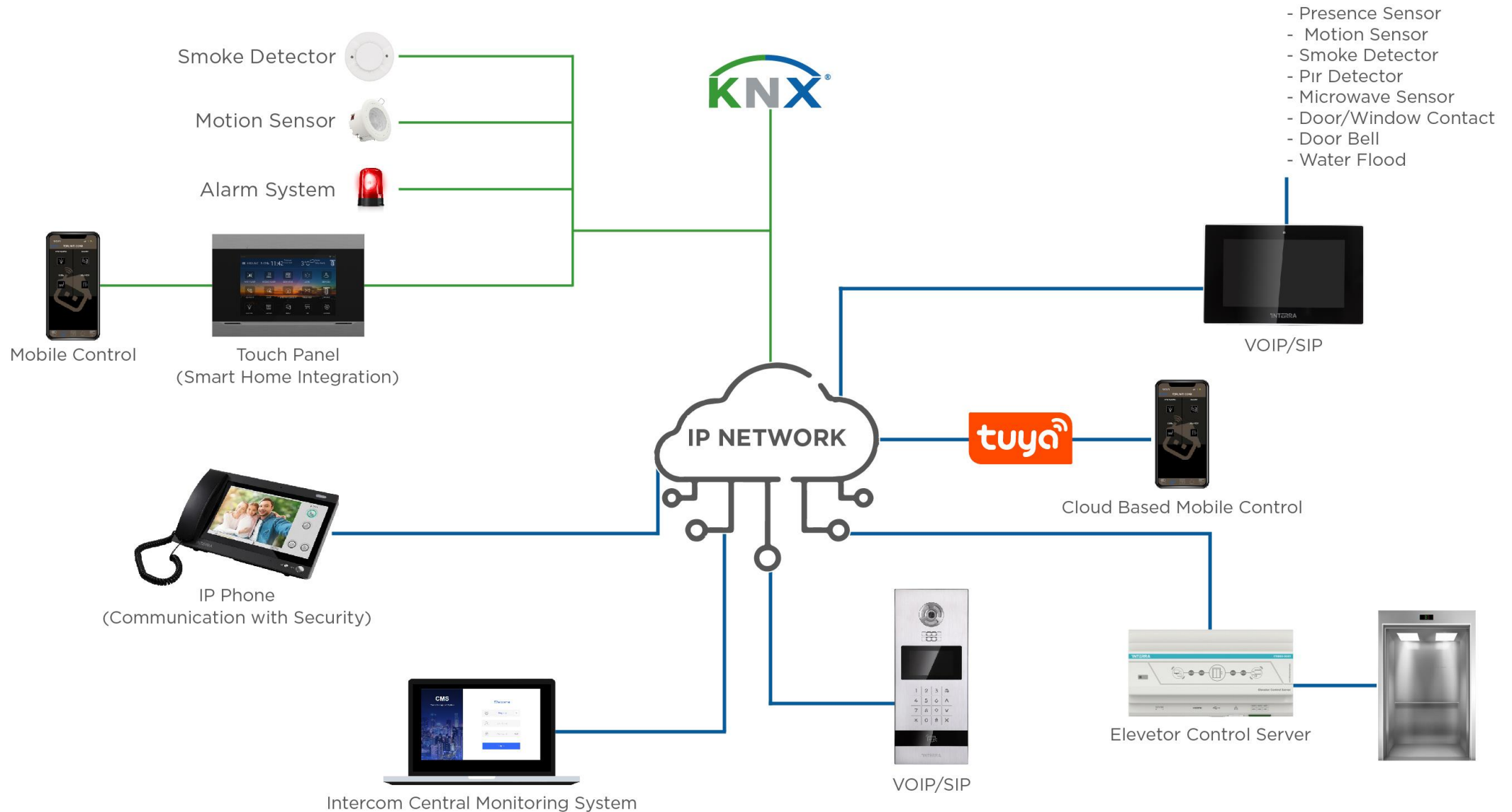


'INTERRA

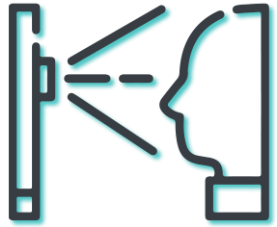
— *Developer of Uniqueness* —

↳ SMART INTERCOM SOLUTIONS

INTERRA INTERCOM SYSTEM TOPOLOGY



INTERRA INTERCOM SOLUTIONS



Face
Recognition



Remote
Mobile Control



Scheduled
Scenarios



IC / ID Card



Missed Call
Date



DTMF



Video Recording
Screenshot



Remote
Mobile Call

INTERRA INTERCOM SOLUTIONS



■ Residence Projects

- ✓ Advanced Building Security
- ✓ Smart Home Integration
- ✓ Comprehensive Security Scenarios
- ✓ Mobile Control Comfort
- ✓ Developable Solution Options



■ Commercial Projects

- ✓ Access Logs by Facial Recognition
- ✓ Ultra Security and Comfort
- ✓ Mobile Access and Monitoring
- ✓ Different Authorizations
- ✓ Smart Building Integration

INTERRA INTERCOM MOBILE INTEGRATION

You can connect your phone to your intercom by downloading the Interra application.

IN **INTERRA**
Cloud-based Intercom APP

Available on the
App Store

GET IT ON
Google Play





'INTERRA

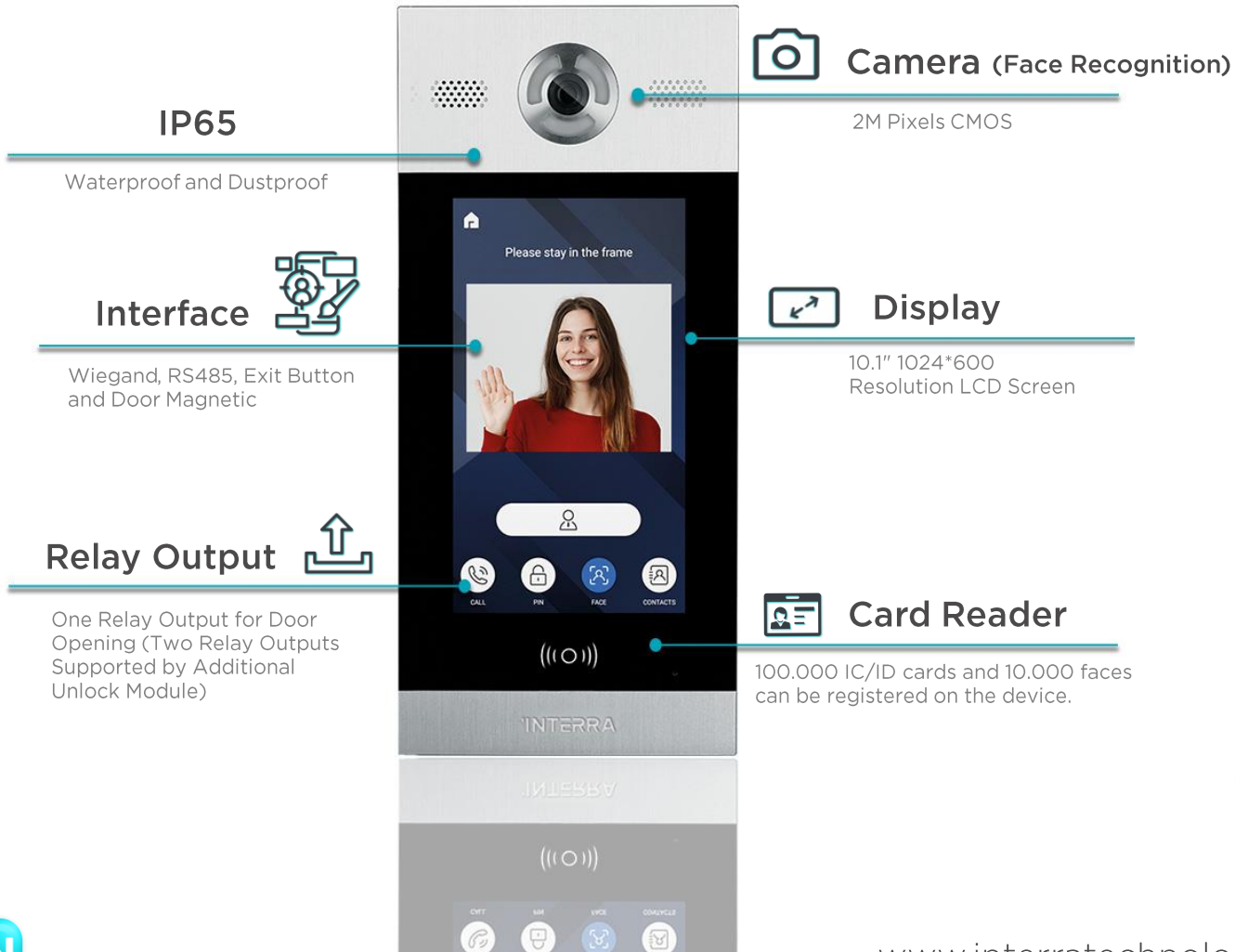
— *Developer of Uniqueness* —

↳ OUTDOOR APARTMENT TYPE

VIDEO UNITS

Android Face Recognition Outdoor Video Intercom

ITR651-0002



- 10.1" Capacitive Touch Screen
- Touch Aluminum
- Android 4.2.2
- SIP Support / VOIP Interview
- Screen Saver over HTTP
- RTSP Stream
- Mobile Control



Working Temperature

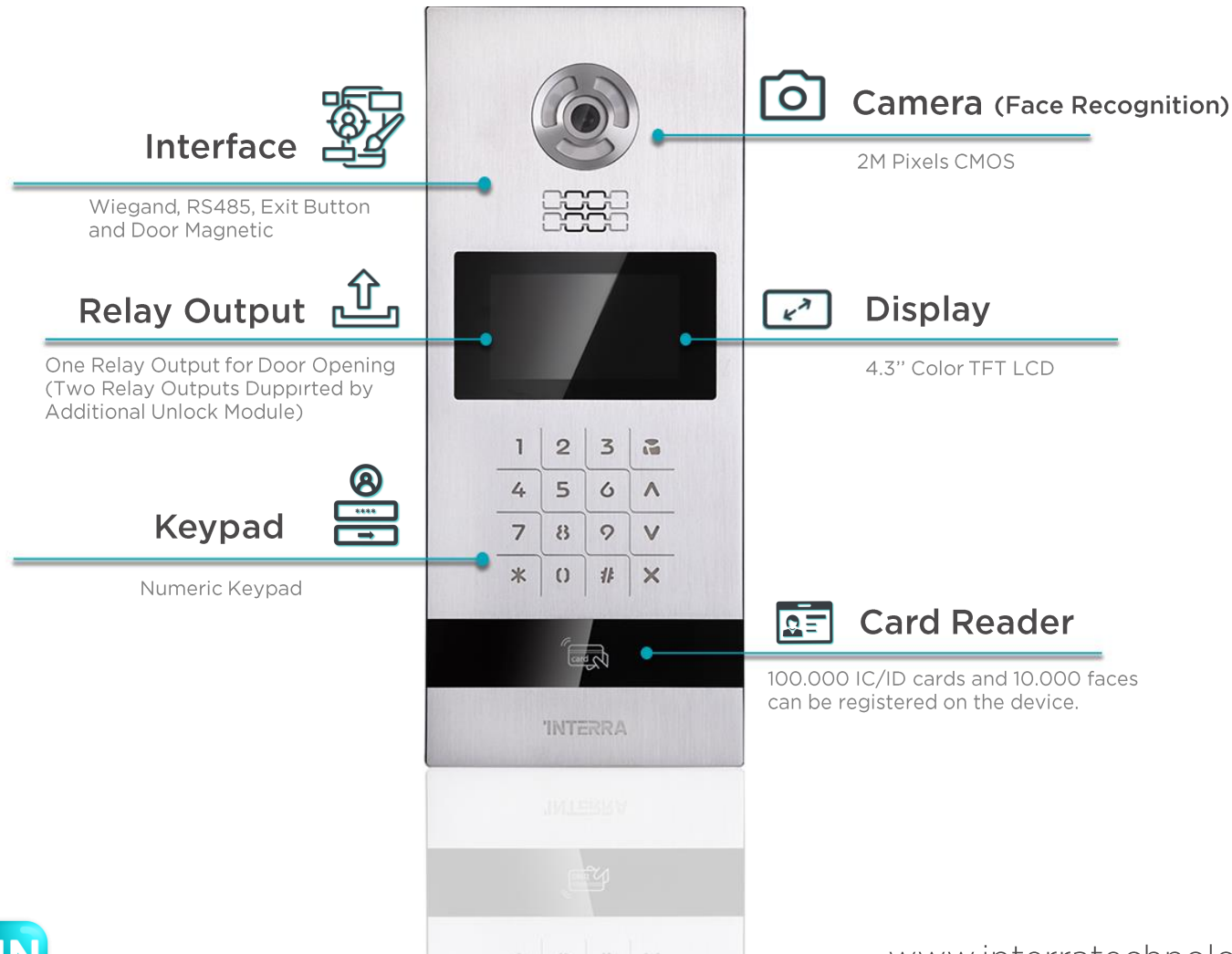
-10°C to +55°C (default); -40°C to +55°C (with heating film)

Storage Temperature

-40°C - +70°C

Android Face Recognition Outdoor Video Intercom

ITR650-0001



- 4.3TFT Screen
- Touch Aluminium
- Android 4.2.2
- SIP Support / VOIP Interview
- Screen Saver over HTTP
- RTSP Streaming
- Mobile Control



Working Temperature

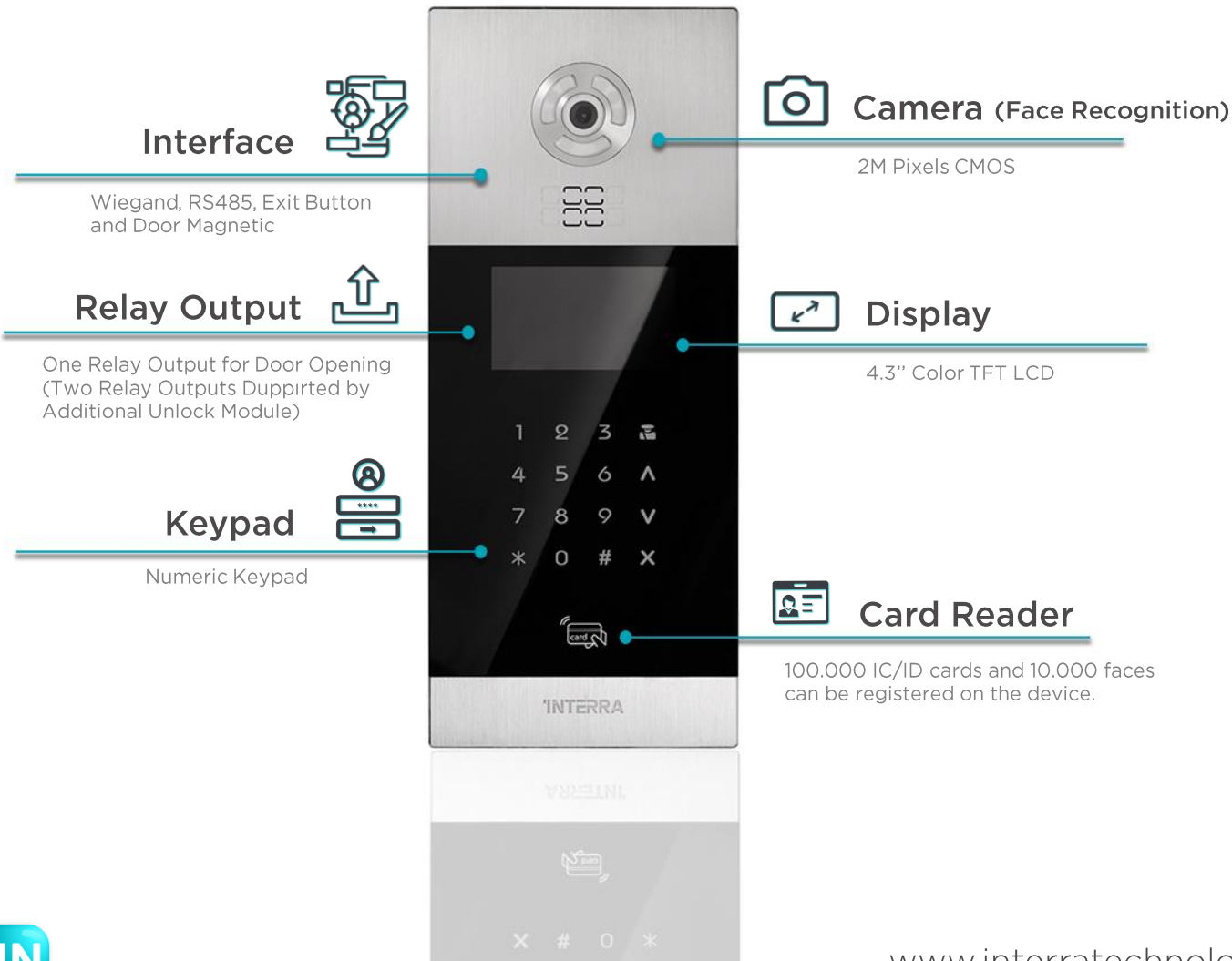
-10°C to +55°C (default); -40°C to +55°C (with heating film)

Storage Temperature

-40°C - +70°C

Android Face Recognition Outdoor Video Intercom

ITR651-0001



- 4.3TFT Screen
- Touch Black Glass
- Android 4.2.2
- SIP Support / VOIP Interview
- Screen Saver over HTTP
- RTSP Streaming
- Mobile Control



Working Temperature

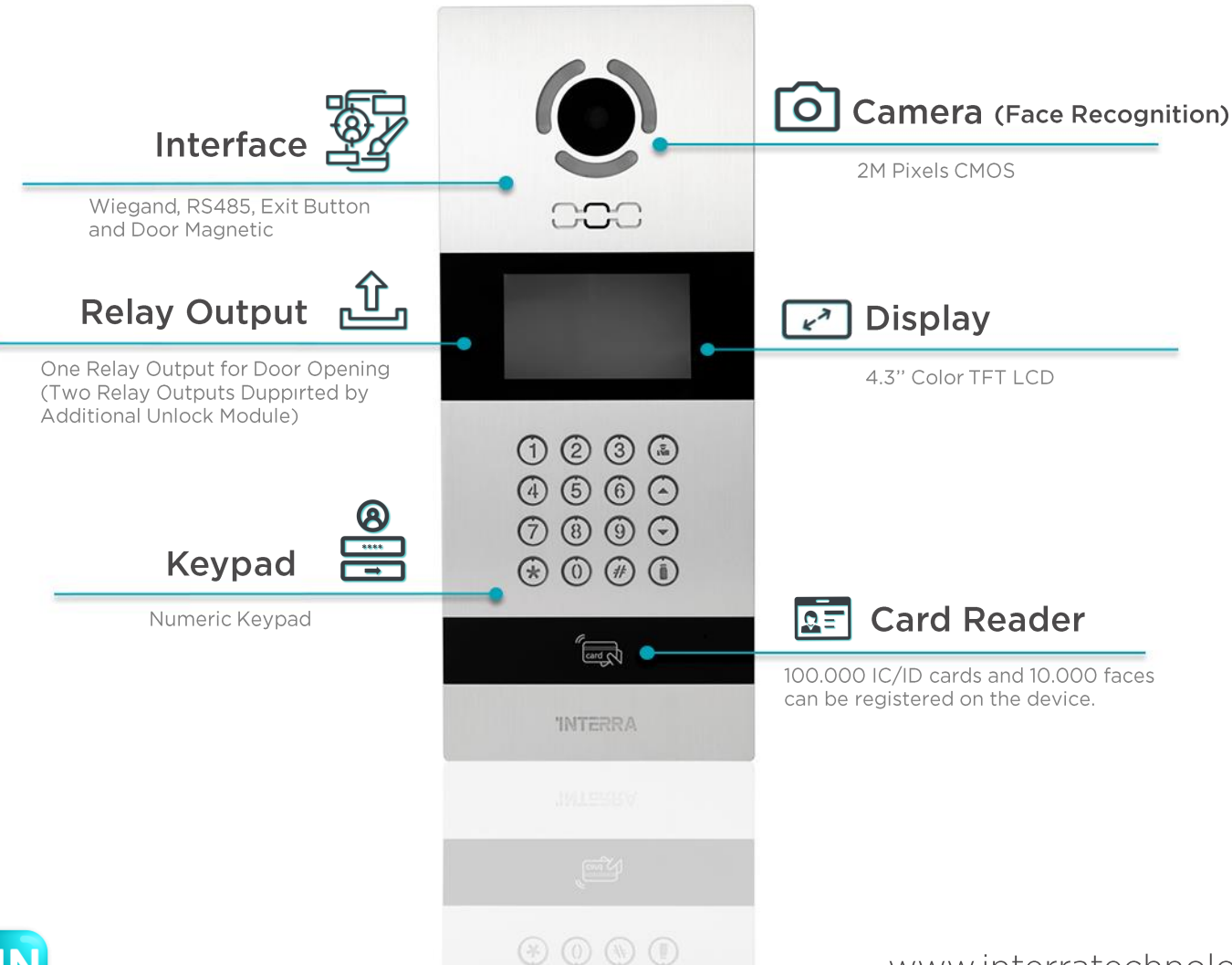
-10°C to +55°C (default); -40°C to +55°C (with heating film)

Storage Temperature

-40°C - +70°C

Android Face Recognition Outdoor Video Intercom

ITR650-0003



- 4.3TFT Screen
- Aluminium Mechanical Button
- Android 4.2.2
- Screen Saver over HTTP
- RTSP Streaming
- SIP Support / VOIP Interview
- Mobile Control



Working Temperature

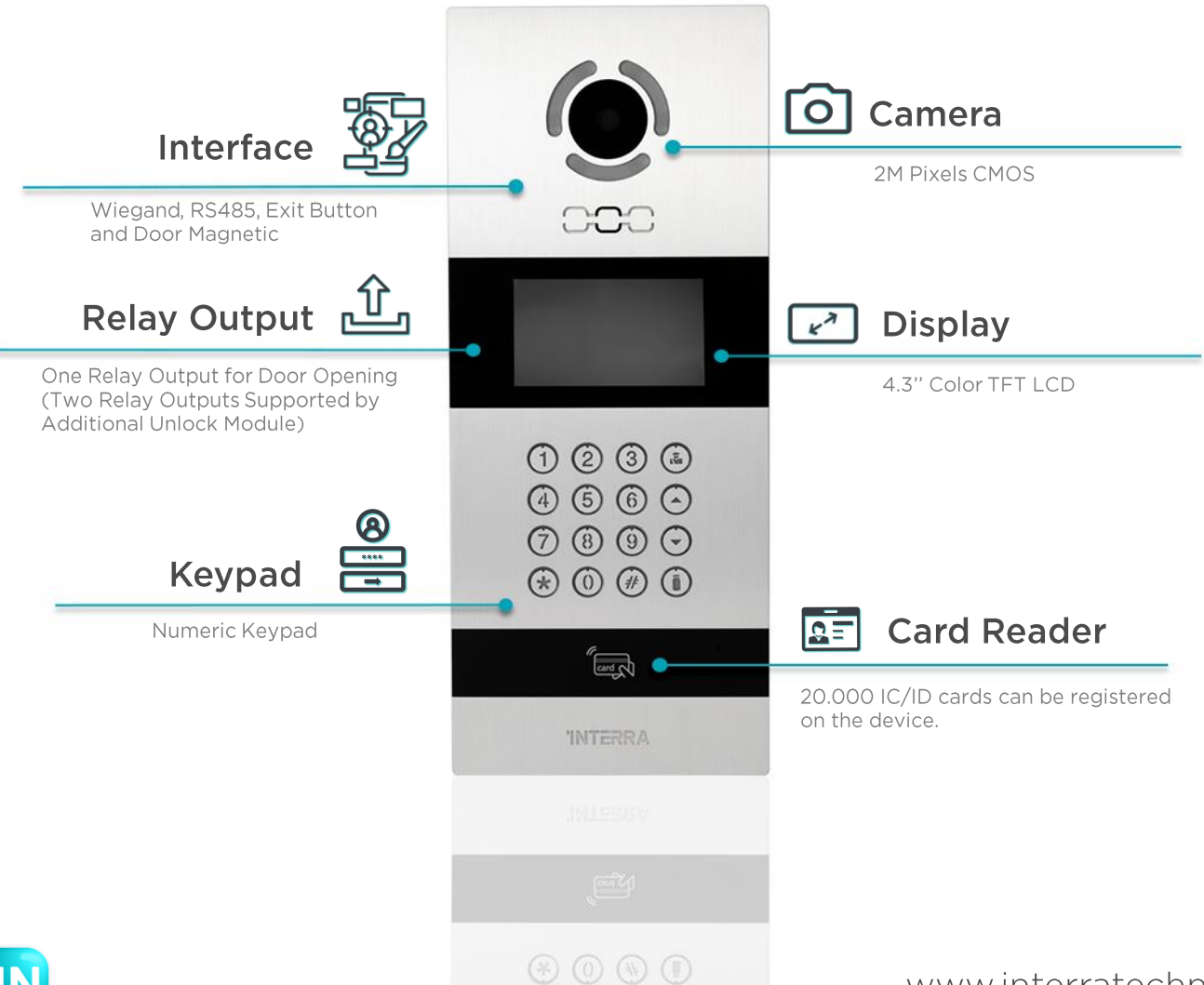
-10°C to +55°C (default); -40°C to +55°C (with heating film)

Storage Temperature

-40°C - +70°C

Linux Outdoor Video Intercom

ITR650-0002



- 4.3TFT Screen
- Aluminium Mechanical Button
- Wiegand, RS485, Exit Button and Door Magnetic Interface
- 2M pixel CMOS
- SIP Support
- Mobile Control



Working Temperature

-10°C to +55°C (default); -40°C to +55°C (with heating film)

Storage Temperature

-40°C - +70°C



'INTERRA

— *Developer of Uniqueness* —

↳ OUTDOOR VILLA TYPE

VIDEO UNITS

Linux One-Button Outdoor Video Intercom

ITR640-0001

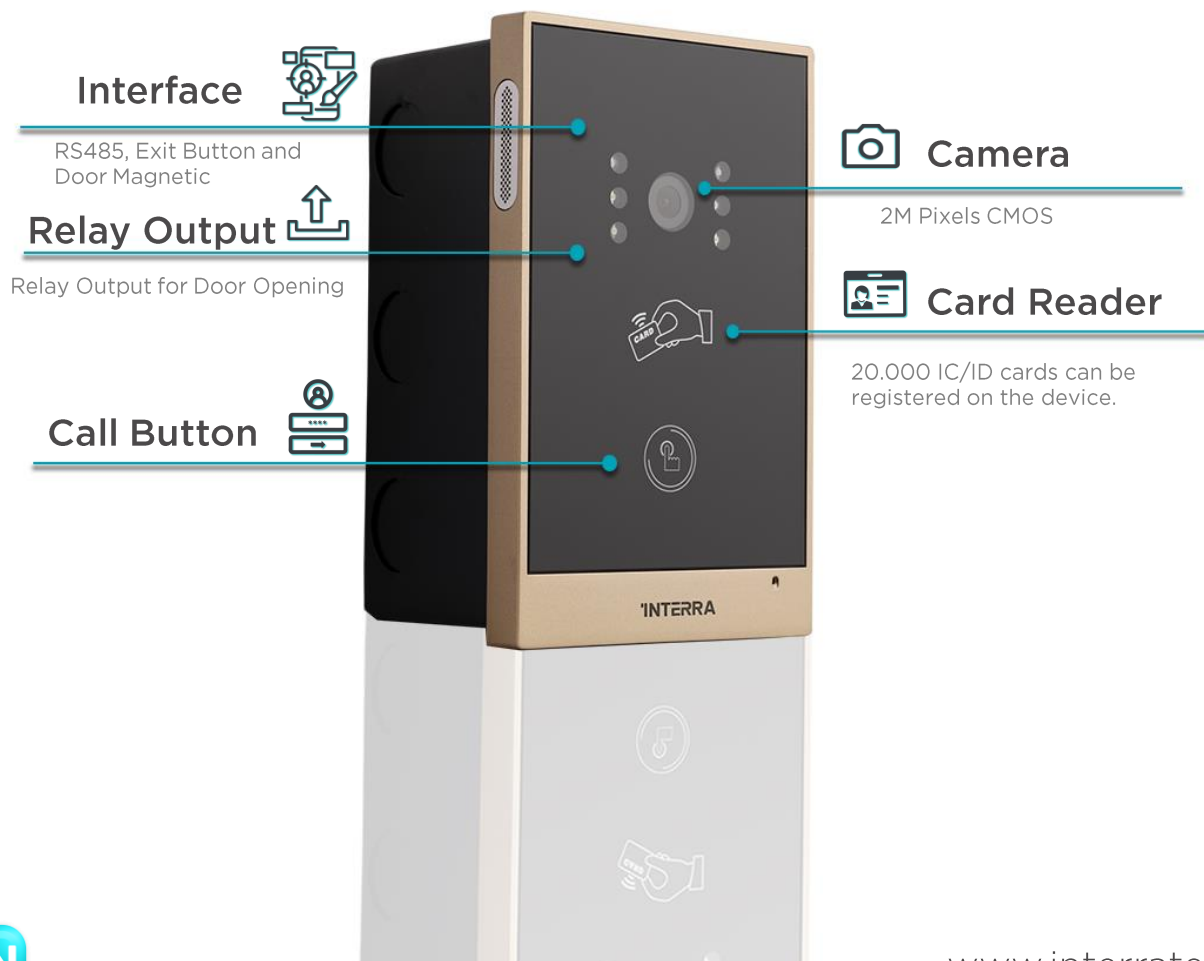


- Linux OS
- Push Button
- SIP Support / VOIP Interview
- RTSP Streaming
- Mobile Control
- Support LED Light for Night Vision
- Support unlocking by Exit button and door magnetic detection.



Linux One-Button Outdoor Video Intercom

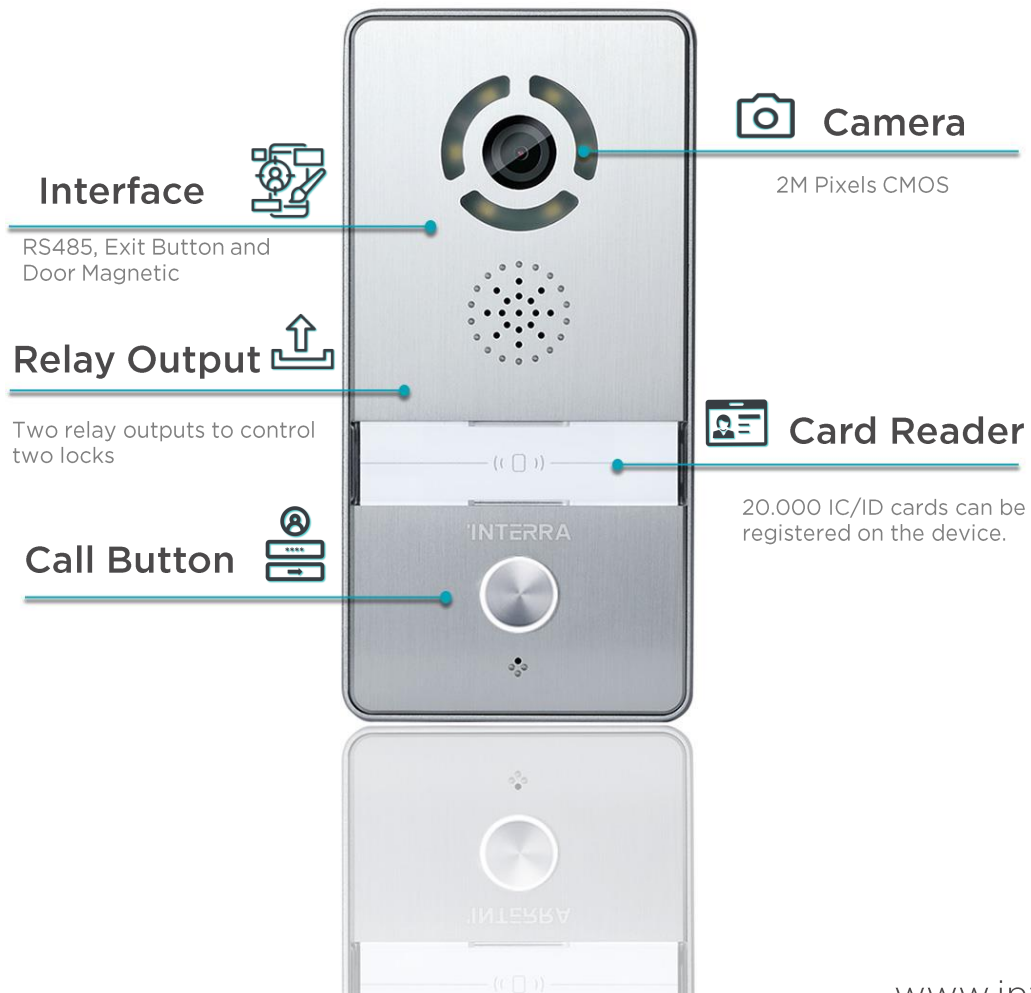
ITR641-0001



- Linux OS
- Touch Button
- SIP Support / VOIP Interview
- RTSP Streaming
- Mobile Control
- Call indoor monitor by one button.
- Support unlocking by Exit button and door magnetic detection.
- Support LED Light for Night Vision

Aluminum Body, Surface Mounted Villa Type Video Intercom

ITR641-0005

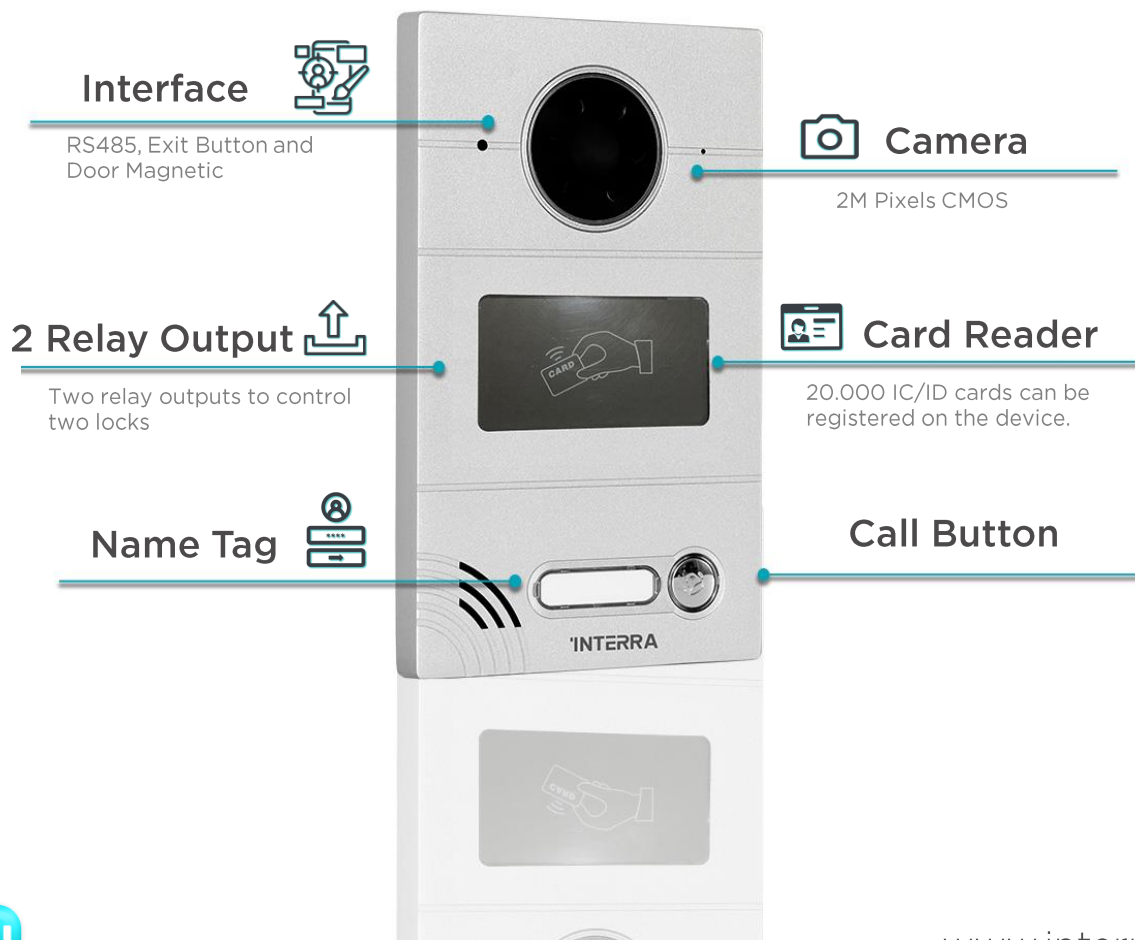


- Name Labeled Mechanical Button
- Calling the Internal Intercom Panel with a Single Button
- Two Relay Outputs
- Door Open Detection and Unlock with Exit Button
- LED Illumination for Night Vision

- ✓ Product Size: 170 x 84,5 x 31 mm
- ✓ Button: One Mechanical Button
- ✓ IP Class: IP65
- ✓ Camera: CMOS 2M pixel
- ✓ Video Resolution: 1280x720p
- ✓ LED Night Vision: Yes
- ✓ Protocol: TCP/IP, SIP

Silver Linux Villa Type Video Intercom

ITR641-0003

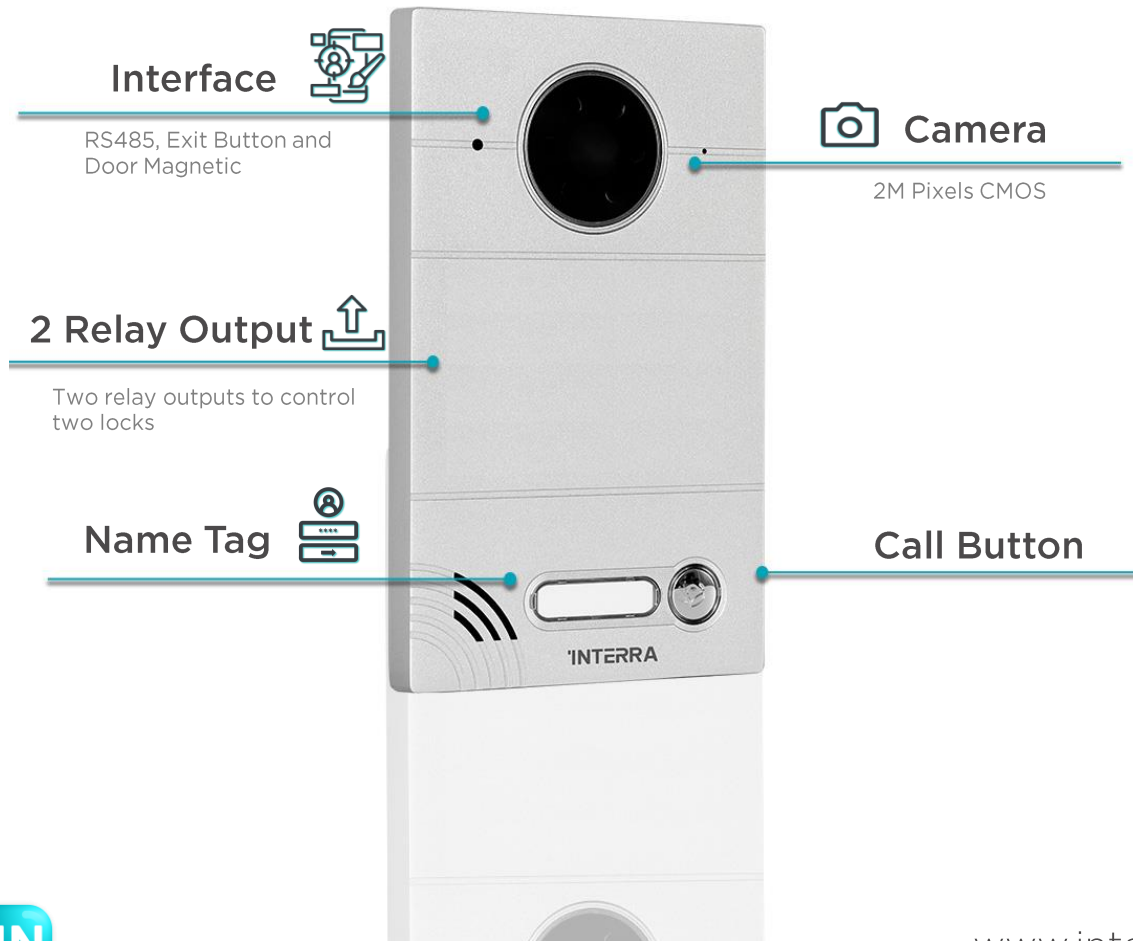


- Name Labeled Mechanical Button
- Adding 20,000 IC/ID Cards
- Two Relay Outputs
- Weather Resistance
- Powered by PoE or External Power Supply

- ✓ Product Size: 116 x 192 x 47 mm
- ✓ Button: One Mechanical Button
- ✓ IP Class: IP65
- ✓ Camera: CMOS 2M pixels
- ✓ Video Resolution: 1280×720p
- ✓ LED Night Vision: Yes
- ✓ Protocol: TCP/IP, SIP

Silver Linux Villa Type Video Intercom

ITR641-0004

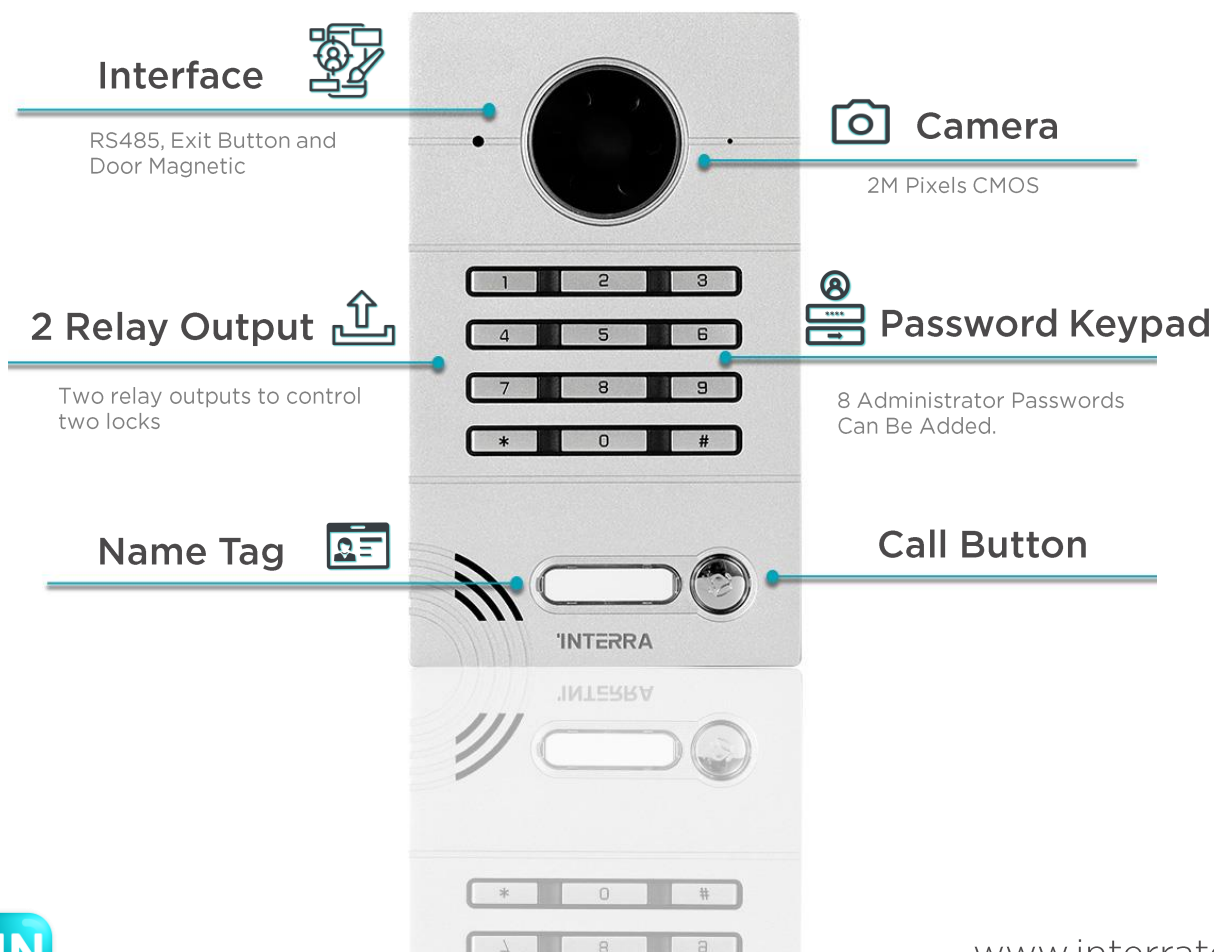


- Name Labeled Mechanical Button
- Two Relay Outputs
- Weather Resistance
- Powered by PoE or External Power Supply

- ✓ Product Size: 116 x 192 x 47 mm
- ✓ Button: One Mechanical Button
- ✓ IP Class: IP65
- ✓ Camera: CMOS 2M pixels
- ✓ Video Resolution: 1280×720p
- ✓ LED Night Vision: Yes
- ✓ Protocol: TCP/IP, SIP

Silver Linux Villa Type Video Intercom

ITR641-0002



- Name labeled Mechanical Button and Password Keypad
- Ability to Add 8 Admin Passwords to Unlock the Door
- Two Relay Outputs
- Weather Resistance
- Powered by PoE or External Power Supply

- ✓ Product Size: 116 x 192 x 47 mm
- ✓ Button: One Mechanical Button
- ✓ IP Class: IP65
- ✓ Camera: CMOS 2M pixels
- ✓ Video Resolution: 1280×720p
- ✓ LED Night Vision: Yes
- ✓ Protocol: TCP/IP, SIP

Black Mini Video Intercom

ITR641-0003



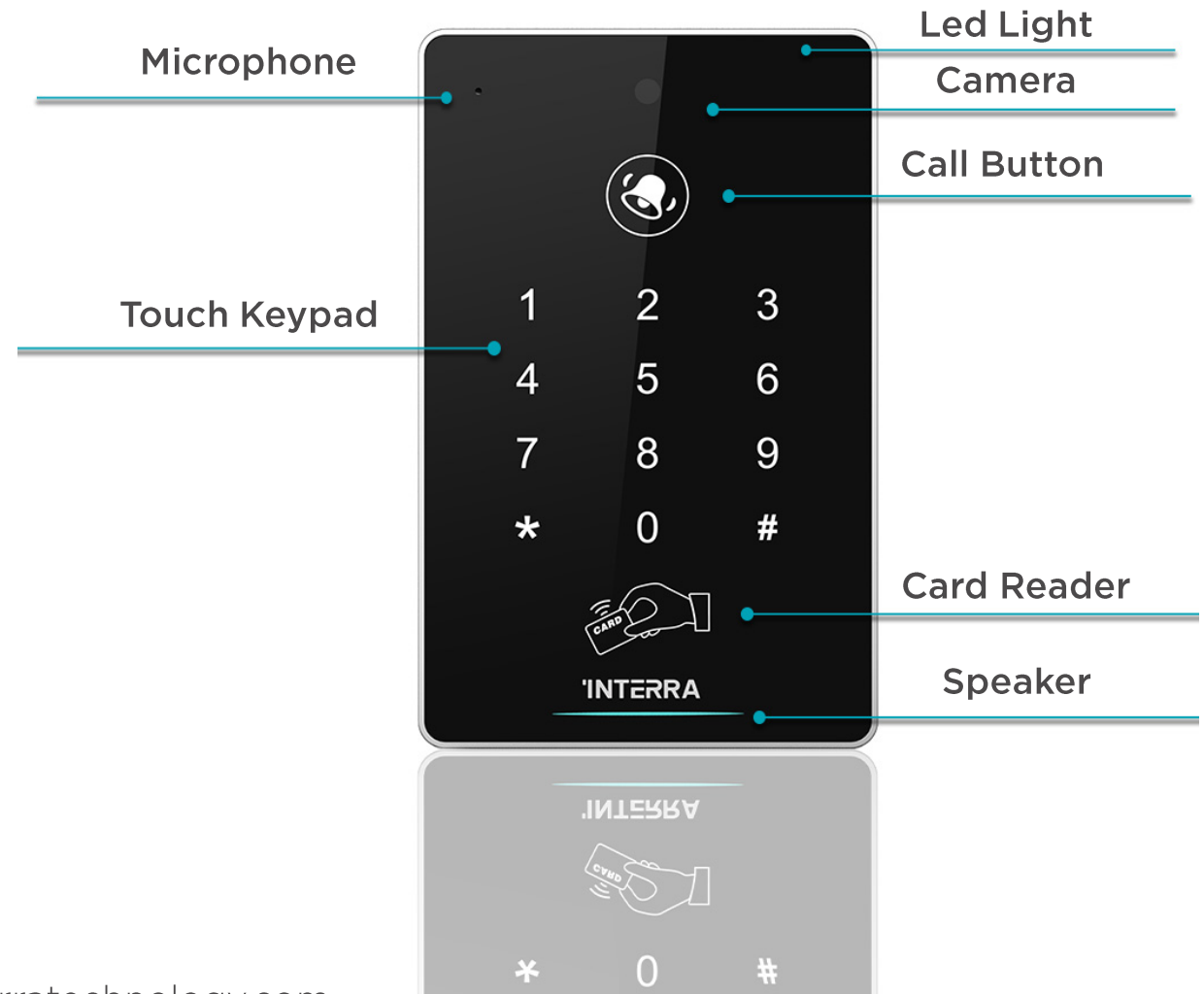
- Card Reader and Mechanical Button
- Ability to Add 20,000 IC/ID Cards to Unlock Doors and When Equipped with an Optional Unlock Module
- Two Relay Outputs
- Weather Resistant
- Can be Powered by PoE or an External Power Supply

- ✓ Product Size: 116 x 192 x 47 mm
- ✓ Button: One Mechanical Button
- ✓ IP Class: IP65
- ✓ Camera: CMOS 2M pixels
- ✓ Video Resolution: 1280x720p
- ✓ LED Night Vision: Yes
- ✓ Protocol: TCP/IP, SIP

Siyah Access Controller

- Password Keypad And Touch Button
- Integrated Camera for Use as Video Intercom
- Ability to Work Not Only as a Video Access Controller, but also as a Video Doorbell
- Remotely Answering a Call with the Handset
- Voice and Video Communication with SIP Phones, Smartphones
- Pad etc with SIP2.0 Protocol. Also, Door Lock Can Be Opened With Password or IC/ID Card.

ITR641-0006





'INTERRA

— *Developer of Uniqueness* —

↳ INDOOR VIDEO UNITS

10.1" Linux Black Touch Indoor Monitor

ITR660-0002



- VOIP: support video call, camera monitor, unlock, VOIP communication and check call logs
- Security: Supports 8 different zones with 3 different scenarios
- Linux operating system
- Monitoring the outdoor video station camera
- User interface customization
- Every SIP conforms to SIP and VOIP standards for easy integration into VOIP-enabled devices.

7" Linux Black Touch Indoor Monitor

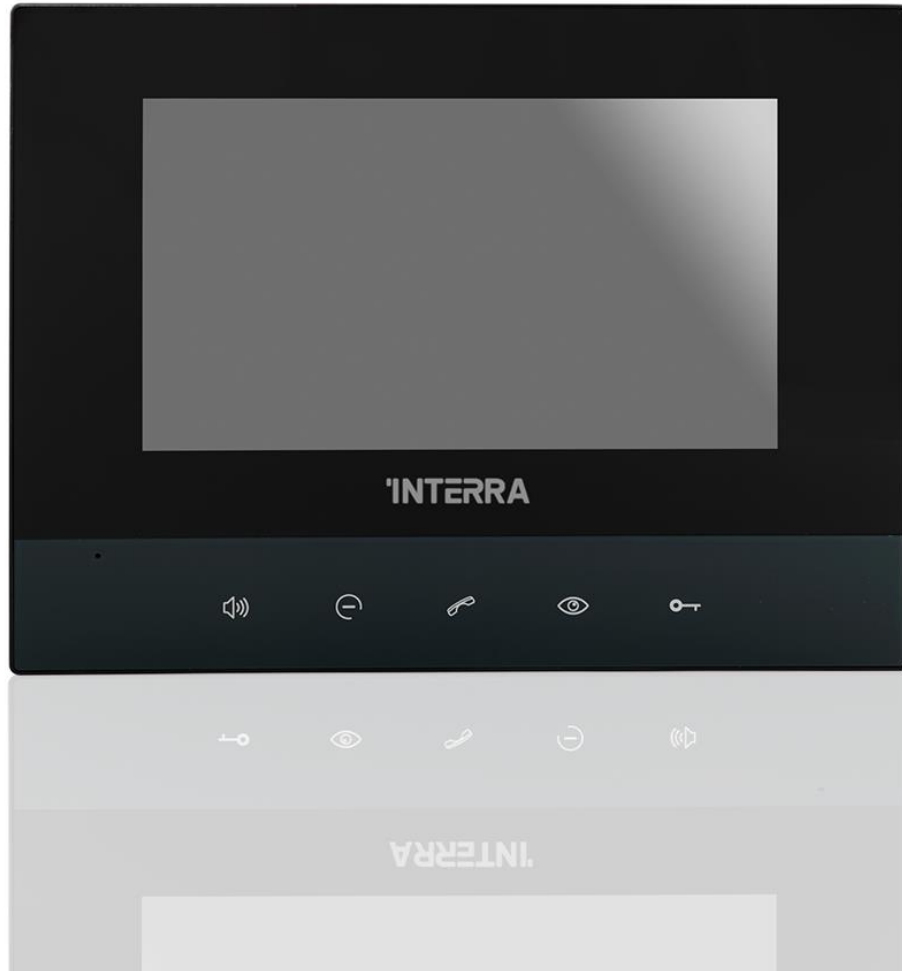
ITR660-0003



- VOIP: support video call, camera monitor, unlock, VOIP communication and check call logs
- Security: Supports 8 different zones with 3 different scenarios
- Linux operating system
- Monitoring the outdoor video station camera
- User interface customization
- Every SIP conforms to SIP and VOIP standards for easy integration into VOIP-enabled devices.

7" Android Indoor Monitor

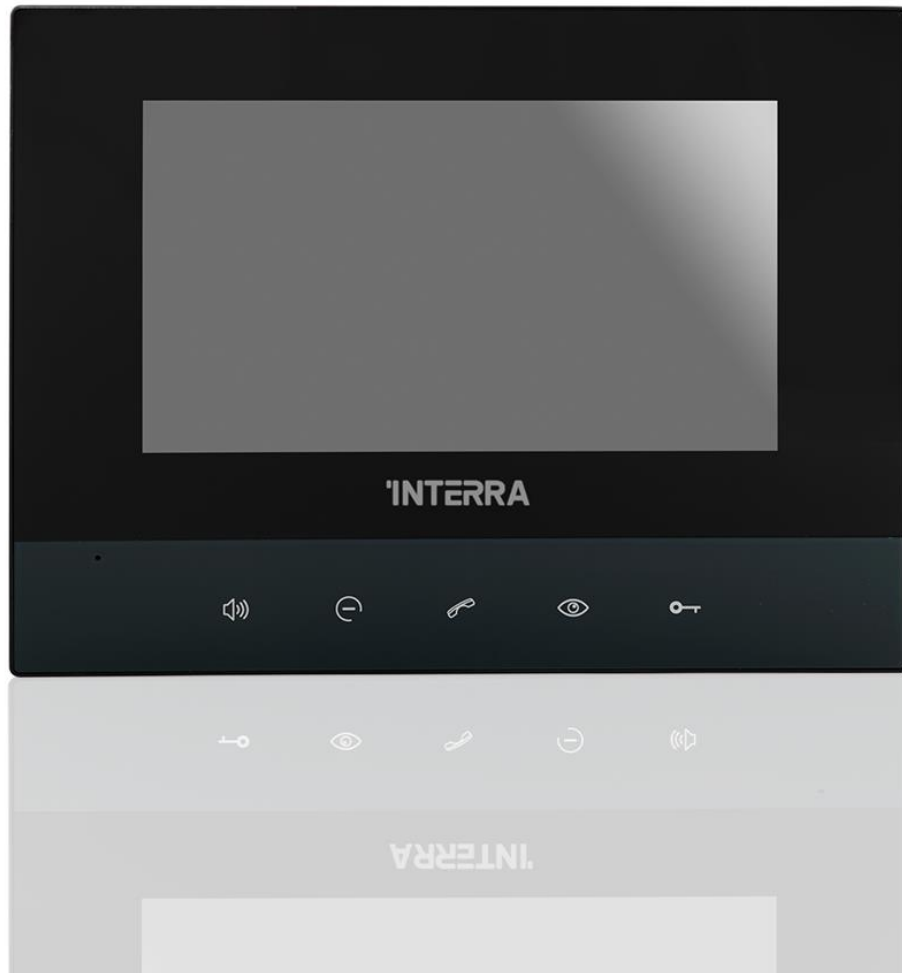
ITR661-0001



- VOIP: supports video call, camera monitor, unlock, VOIP communication, and check the call records
- Security: supports 8 different regions with 3 different scenarios
- Android 4.4.2 OS
- Watching the outdoor video station camera
- Touch Buttons for Answer, Reject, Call, Camera Monitor, and Unlock
- User interface customization

7" Linux Indoor Monitor

ITR660-0001



- VOIP: supports video call, camera monitor, unlock, VOIP communication, and check the call records
- Security: supports 8 different regions with 3 different scenarios
- Linux OS
- Watching the outdoor video station camera
- Touch Buttons for Answer, Reject, Call, Camera Monitor, and Unlock
- User interface customization

7" Linux Full-Touch Indoor Monitor

ITR662-0001



- VOIP: supports video call, camera monitor, unlock, VOIP communication, and check the call records
- Security: supports 8 different regions with 3 different scenarios
- Linux OS
- Watching the outdoor video station camera
- User interface customization



2.4" Wireless Indoor Monitor (IP Phone)

ITR675-0002



2.4" Screen Wireless Intercom Monitor Handset (IP Phone) for intercom management provides flexibility in your home by allowing you to control your door and communicate freely with your guests. The entire unit consists of a handset and a dockable charging station. The handset can be moved thanks to its rechargeable battery so residents can answer a call anytime and anywhere. Customized to meet the user's needs.

- ✓ Display: 2.4 inch LCD,480x272
- ✓ Power: DC12V
- ✓ Camera: No
- ✓ Protocol: TCP/IP, SIP
- ✓ Multi-Language: Yes
- ✓ User Interface Customization: Yes

A decorative graphic on the right side of the page consisting of numerous thin, teal-colored lines that curve and flow downwards, creating a sense of movement and depth.

'INTERRA

— *Developer of Uniqueness* —

↳ SIP Management Center

SIP Management Center w/ Touch Screen

10.1- inch Capacitive Touch Screen



Android OS



1024x600 Resolution



Handset or Hands-Free Communication



PoE and DC12V Adapter



SIP 2.0 for Easy Integration

ITR675-0001

Interra SIP Management Center w/ Touch Screen is mainly used in guard stations, it enables concierge to send messages, for example, utilities, weather forecasts, etc. to apartment residents. It can also manage the access control for visitors, to gives you the combined benefit of security and convenience.



'INTERRA

— *Developer of Uniqueness* —

 **THANKS**